



# GREEN ELEGANCE

CONNECTIVITY | ELEGANCE | COMFORT

*Where Greenery & Luxury  
is not an afterthought*





We Build Relationship  
We Build Environment

Green Elegance brings you spaciouly designed 2BHK, 4BHK Villas in multiple planning options. Offering a good quality infrastructure with modern amenities at an affordable price is what we strive to achieve.

Home at Green Elegance offers a good lifestyle, with recreational facilities, good finish and well thought of planning, but at a very attractive price. It is located in the well developed residential locality of Siliguri, nearby NH 10 and all other urban utilities like Schools, Colleges, Hospitals, Malls, Multiplexes, Retails etc.

A well experienced, and committed & dedicated team of real estate developers ensure that your home has a superior finish, reputed quality fittings & fixtures and timely completion as well.

Green Elegance shall bring a truly elite lifestyle for you and your family today, tomorrow & forever!



LIVE  
THOSE  
DREAMS





**GREEN ELEGANCE**  
CONNECTIVITY | ELEGANCE | COMFORT

### LOOK UP TO AN UPBEAT EXUBERANCE

With such a lively environment and lovely spaces, the sheer abundance at **Green Escape** plays the perfect symphony of serenity and bliss. The cordially crafted state-of-the-art amenities stir your enthusiasm and uplift your exuberance. Spreading joy and sharing smiles would become a daily practice at Venkatesh Skydale.







**GREEN ELEGANCE**  
CONNECTIVITY | ELEGANCE | COMFORT

### BREATHE IN POSITIVE VIBES, DAY IN & DAY OUT

At **Green Elegance**, preserving your health and wellness has been our topmost priority. The mindful spaces exude peace of mind like never before and fill you with rejuvenating energy that keeps you charged and pumped up.





DISCOVER THE



GREEN LIVING



#### RAINWATER HARVESTING SYSTEM

It saves more natural water for future use and vastly improves water sustainability.



#### WATER EFFICIENT FIXTURES

This simple addition ensures that water consumption is optimised and water bills are reduced.



#### HEALTH-SAFE PAINTS AND ADHESIVES

Low Volatile Organic Compound (VOC) paints, adhesives and sealants for interior fixtures ensure your health and safety.



#### DISCOVER THE GREEN LIVING

At Green Elegance, lifestyle that involves making choices to reduce your impact on the environment. It's a way to live in balance with nature, conserving resources and promoting ecological harmony.



#### WASTE SEGREGATION SYSTEM

Wet and dry waste management ensures that waste is handled in an eco-friendly manner.



#### SMART LIGHTING

CFLs and LEDs are used in external and common lighting areas to promote low electricity consumption.



#### WATER TREATMENT

Used water is treated and safely reused, thus reducing the use of new water.



#### RECYCLED CONSTRUCTION MATERIALS

Recycled and locally produced materials have been used, thus reducing carbon dioxide emissions.





## DISCOVER THE GREEN LIVING

At Green Elegance, preserving your health and wellness has been our topmost priority. The mindful spaces exude peace of mind like never before and fill you with rejuvenating energy that keeps you charged and pumped up.

### COMMON AMENITIES



Jogging Track/Walkway



Yoga & Meditation Area



Party Lawns



Children's Play Area  
(Rubber Flooring)



Gym with Spa  
(Separate for Ladies & Gents)



Creche with Play Area  
(Rubber Flooring)



Swimming Pool  
& Kids Pool



Senior Citizen Sit-Out



Indoor Games



Seating Area



Cabana



Automatic Lift



24x7 Security



CCTV Camera  
Surveillance





## The Location

One of the most blessed location of Siliguri, **Green Elegance** enjoys proximity to various residential and commercials developments and share a rich living experience.

It is a preferred destination for setting up dream house for many due to excellent connectivity. Retail and Commercial developments, Entertainment Avenues, Shopping Centres, Hospitals, Restaurants, Educational Institutions.

**Green Elegance** has a seductive appeal and glitters of a great place.



### Proximity




	<b>SCHOOLS COLLEGES</b>	Inspiria Knowledge Campus   Gyanjyoti College   North Bengal University   St. Joseph School
	<b>HOSPITALS</b>	Neotia Getwell   Nightingale Hospital & Diagnostics   Galaxy Hospital
	<b>SHOPPING</b>	City Centre
	<b>HOTELS</b>	Montana Vista   Barsana Hotel & Resort   Four Vedas Hotel
	<b>IMPORTANT LANDMARKS</b>	Bagdogra Airport   Siliguri Junction Rail Station





# Master Plan



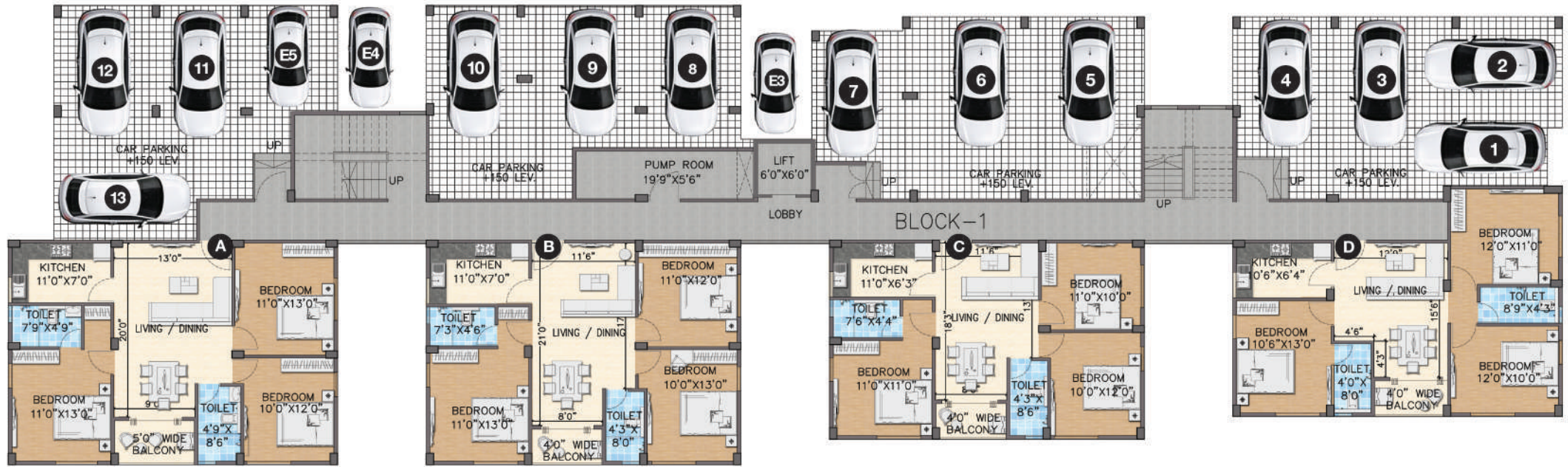
	TYPE	SIZE	NOS.
	CAR-1	2500X5000	1-46 NOS.
	CAR-2	2250X4500	47-80 NOS.
	CAR-3	2250X4000	81-85 NOS.





# Block - 1

## Ground Floor Plan

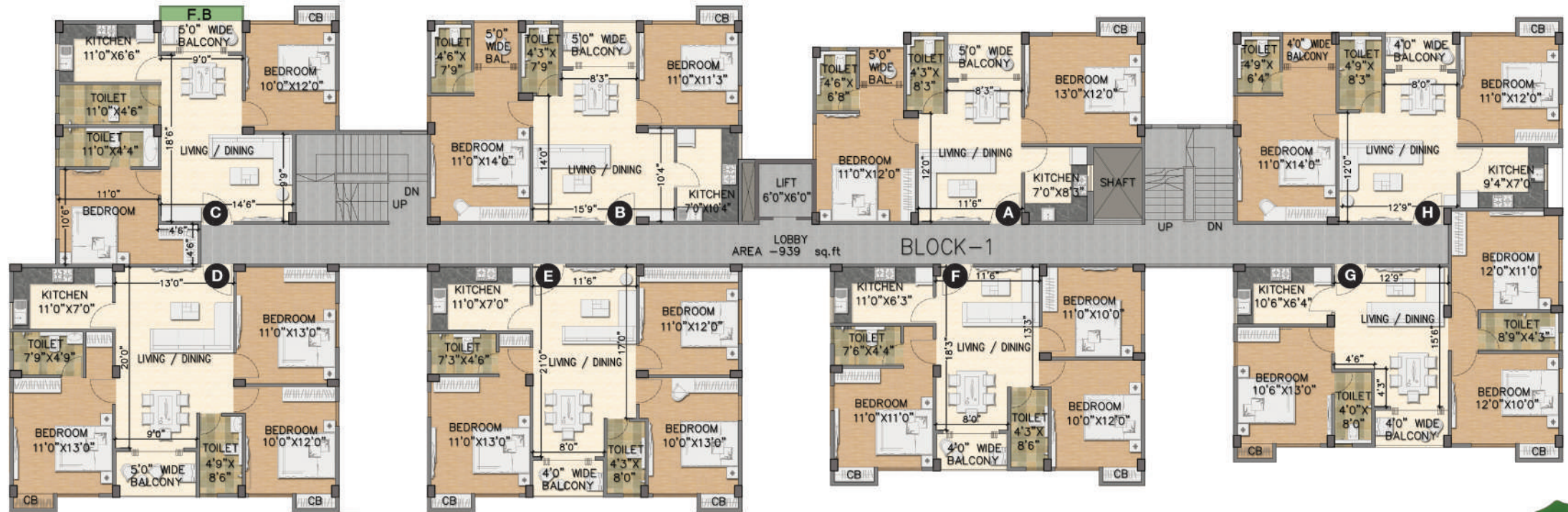


BLOCK 1 - Ground Floor				
Flat No.	Type	Rera Carpet	Built-Up	SBUA
A	3BHK	851	948	1302
B	3BHK	824	949	1275
C	3BHK	723	803	1130
D	3BHK	740	824	1130



# Block - 1

## 1st - 3rd Floor



BLOCK 1 - 1st - 3rd Floor Plan				
Flat No.	Type	Rera Carpet	Built-Up	SBUA
A	2BHK	606	722	1010
B	2BHK	674	791	1105
C	2BHK	664	740	1026
D	3BHK	850	946	1319
E	3BHK	824	906	1264
F	3BHK	723	802	1130
G	3BHK	739	821	1149
H	2BHK	645	748	1038

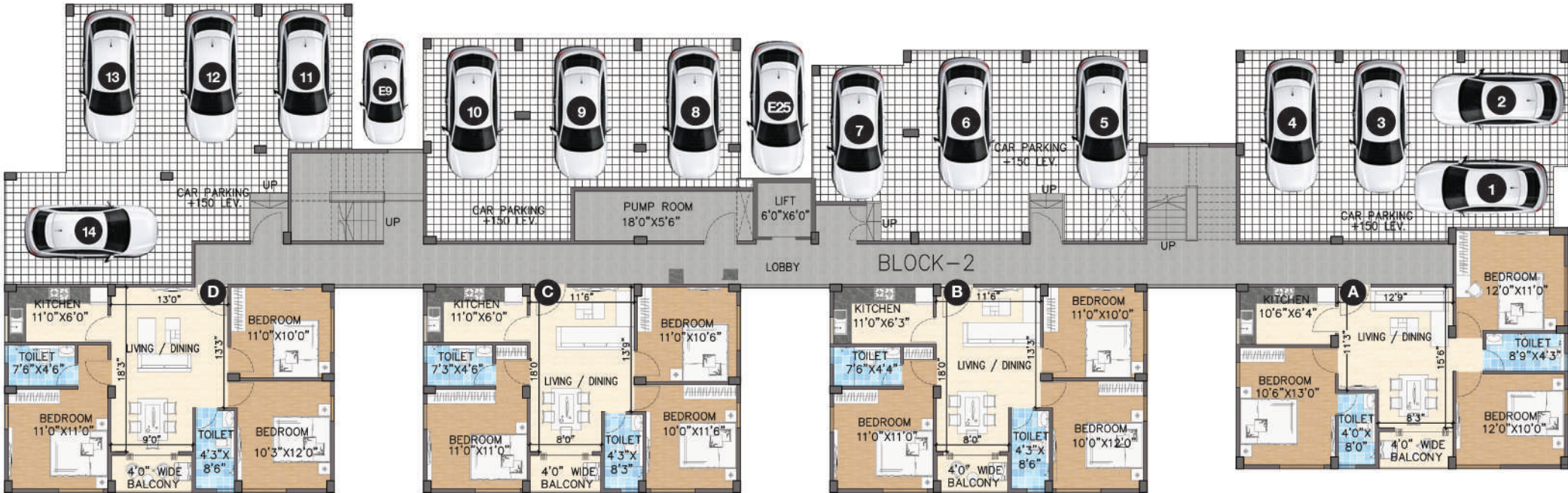




Block - 1-H  
Isometric View - 2BHK



Block - 2  
Ground Floor Plan



BLOCK 2 - Ground Floor				
Flat No.	Type	Rera Carpet	Built-Up	SBUA
A	3BHK	739	823	1130
B	3BHK	723	802	1275
C	3BHK	723	802	1130
D	3BHK	751	835	1147





Block - 2  
1st - 3rd Floor Plan



BLOCK 1 - 1st - 3rd Floor Plan				
Flat No.	Type	Rera Carpet	Built-Up	SBUA
A	2BHK	606	722	1010
B	2BHK	674	791	1098
C	2BHK	831	914	1267
D	3BHK	751	831	1164
E	3BHK	723	802	1130
F	3BHK	723	802	1124
G	3BHK	739	821	1155
H	2BHK	645	748	1039

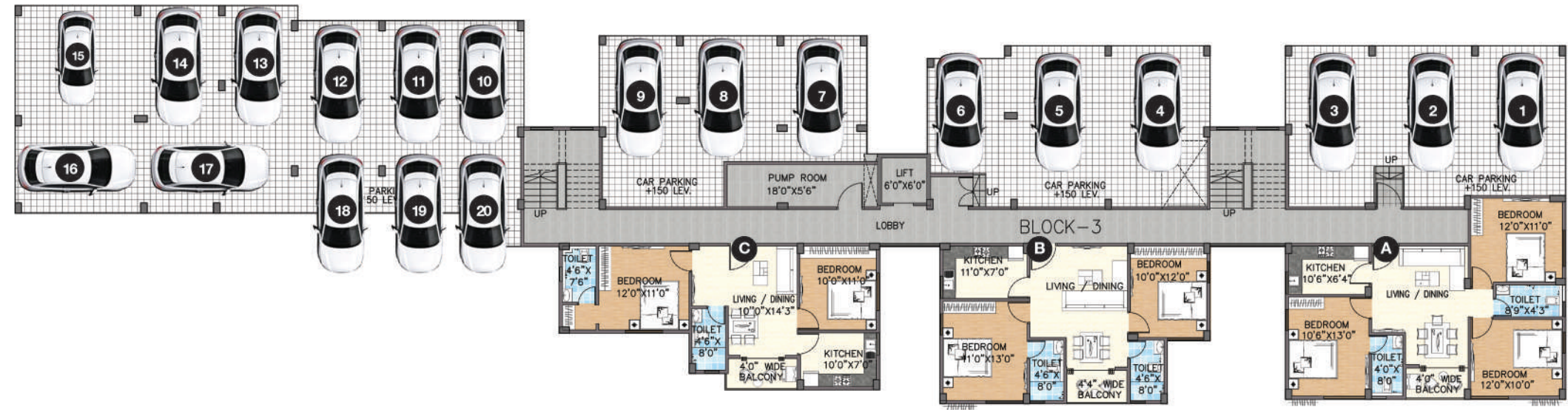
Block - 2-D  
Isometric View - 3BHK





# Block - 3

## Ground Floor Plan



BLOCK 3 - Ground Floor				
Flat No.	Type	Rera Carpet	Built-Up	SBUA
A	3BHK	739	823	1130
B	2BHK	612	692	975
C	2BHK	579	664	936



# Block - 3

## 1st - 3rd Floor



BLOCK 3 - 1st - 3rd Floor Plan				
Flat No.	Type	Rera Carpet	Built-Up	SBUA
A	2BHK	606	722	1010
B	2BHK	674	790	1105
C	2BHK	545	610	845
D	3BHK	837	936	1329
E	3BHK	579	664	936
F	3BHK	612	692	985
G	3BHK	739	821	1155
H	2BHK	645	748	1045

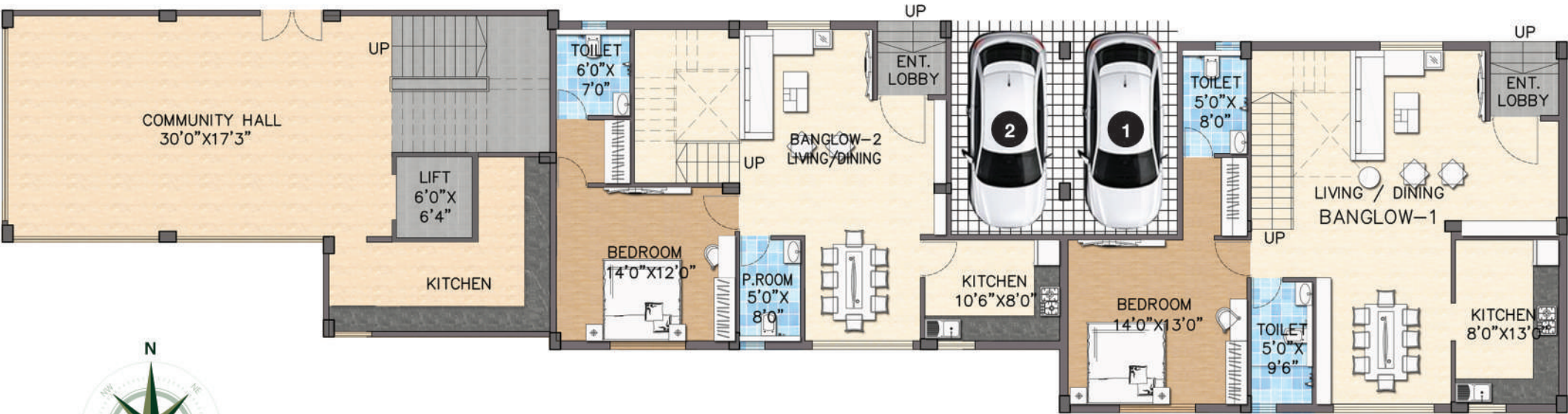




Block - 3-D  
Isometric View - 3BHK



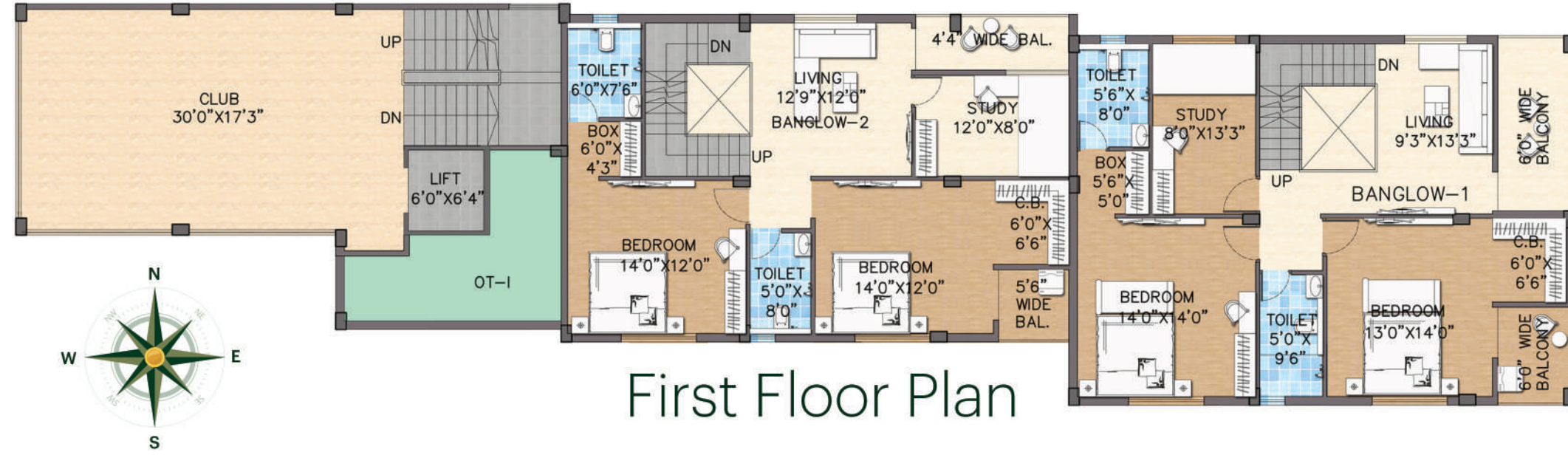
Ground Floor



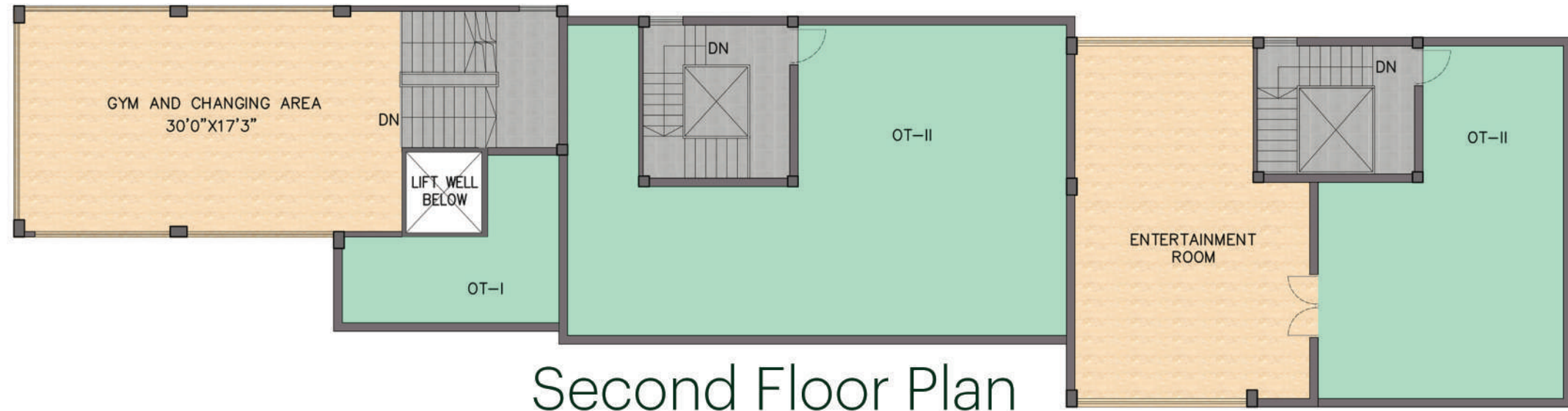
Bungalow 1 & 2					
Bungalow	Type	Rera Carpet	Tenament Area	BUA	SBUA
1	3BH Pvt. Terrace	2244	2372	2615	3461
2	3BH Pvt. Terrace	1618	1700	1868	2242







First Floor Plan



Second Floor Plan

## Our Projects

**green ville**  
apartments

Iskon Mandir Road

**EUROPA**  
SERENITY BEGINS HERE

Dagapur

**GREEN RETREAT**  
SILIGURI  
Shastri Nagar

**GREEN HERITAGE**  
APARTMENTS

Jyoti Nagar

**GREEN exotica**

2.5 Mile, Check Post

**GREEN ELEGANCE**  
CONNECTIVITY | ELEGANCE | COMFORT  
Matigara

**GREEN delight**

Shastri Nagar





#### Developer



#### Architect



#### Site Address

Near Koushal Hyundai  
Opp. Jesu Ashram, Matigara, Siliguri

#### Office Address

T-17, 3rd Floor, Goyal Plaza Building  
Opp. of Sachitra Hotel  
Sevoke Road, Siliguri - 734001

#### Contact

Call Us : +91-93393 61344  
email : greenhillgroup01@gmail.com  
website : www.greenhillgroup.in

DISCLAIMER: This document is not a legal offering. It only describes the intent & concept of Green Elegance. All the areas/dimensions/layout/elevations/pictures, etc. are only indicative and not as per scale. All the details are subject to change, alteration and modification as per the developer's discretions.